

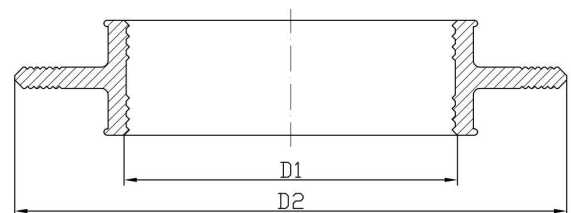
DDL[®] MK-KG

Installation guide for wall collar Seal against pressing water

- The pipe surface needs to be clean and without grooves or striations (for all types of pipes).
- Slide the wall collar onto the pipe and locate it in the middle of the masonry. Neutral soap on the pipe can facilitate the assembling.
- Fasten the tightening straps with a hexagon wrench or a screwdriver.
- Make sure the KG wall collar sits firmly.
- Fill the penetration with filling material (concrete or similar).
- The depth of coverage should be at least 3 cm.

Pipe-OD	(DN)	Ø carrier pipe area [mm]	D1	D2	Ø Tightening straps [mm]
32	25	31–32	29	127	32–50
40	32	39–42	38	136	40–60
50	40	48–53	48	146	50–70
63	50	61–64	60	158	60–80
75	65	72–80	71	169	70–90
90	80	87–92	84	182	90–110
110	100	107–115	105	203	110–130
125	125	123–130	120	218	120–140
140	150	137–147	135	228	140–160
160	150	157–166	154	252	160–180
180	200	177–187	175	273	190–210
200	200	197–207	195	293	210–230
225	250	220–230	215	315	240–260
250	250	245–260	245	343	260–280
280	300	275–290	275	373	280–300
315	300	310–324	310	408	320–340
355	350	350–365	352	435	360–380
400	400	395–410	395	480	395–420
400*	400*	395–410	395	480	415–470

* wall collar with extended tightening straps for cast or stoneware pipes



The purchaser of the DDL wall collar is responsible for its suitability for use and for all damages (immediate or consequential) resulting from improper installation.