

# DDL® Wall Penetrations

- product overview
- request for detailed information

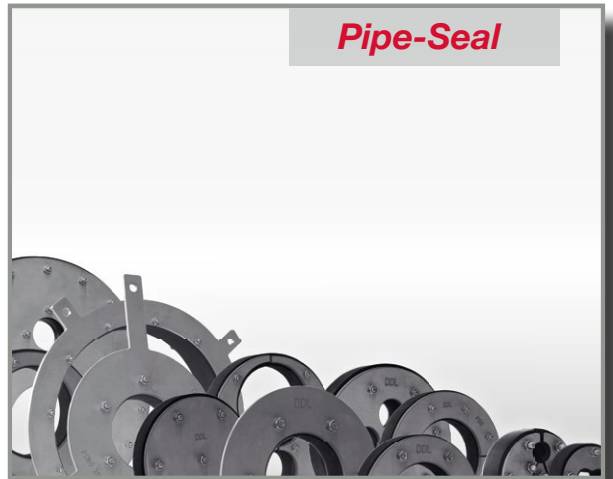
## Ring-Seal



### Ring-Seal modular seals

- Single-layered 2 bar / double-layered 5 bar
- EPDM or NBR
- Stainless steel or galvanized steel
- Special version for drinking water

## Pipe-Seal



### Pipe-Seal compact seals

- Single-layered 3 bar / double-layered 5 bar
- EPDM or NBR • Stainless steel
- Single penetration / multiple penetration
- Eccentric / closed / split versions
- Special version for drinking water

## PS Senso®



### Pipe-Seal Senso for district heating pipes

- Core component made of medium-hard EPDM rubber
- Cover component made of extra soft thermoset elastomer
- Stainless steel • 1.5 bar

## PS-Hybrid



### Pipe-Seal Hybrid for polyethylene-(PE)-pipes

- Round frame made of medium-hard EPDM
- Soft inner ring made of extra soft thermoset elastomer
- Stainless steel • 1.5 bar

## DSP 150



### DSP 150 cable penetrations

- Seal packings / angular packings / front flanges with bayonet mount / seal packings with plug-in sleeves
- System cover wall connections with bayonet mount
- Seal inserts
- Single seal packings with factory-mounted wall connectivity



**DDL®**

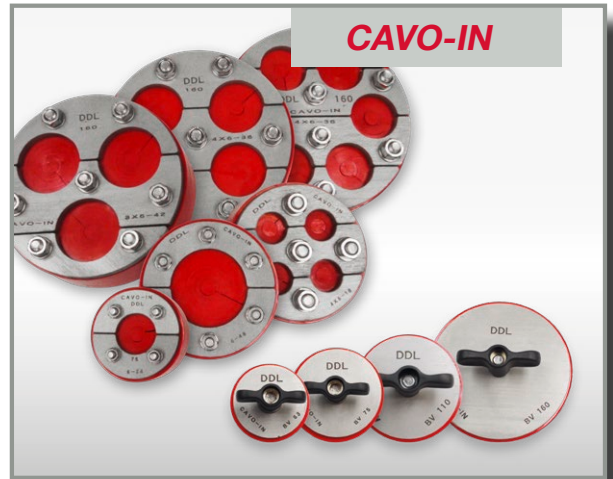
Durchführungstechnik  
Dichtsysteme  
Lutz

# DDL® Wall Penetrations

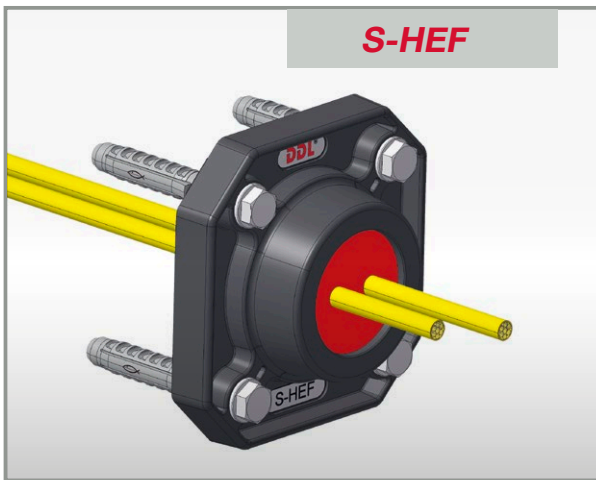
- product overview
- request for detailed information



- Wall collar**
  - EPDM / Triethyl phosphate
  - Stainless steel tightening straps



- CAVO-IN cable penetrations**
  - CAVO-IN Segmental ring seal insert
  - CAVO-IN Blind plug for corrugated cable conduits
  - Two-component construction



- S-HEF divisional building entry**
  - Combinable for single or multiple-division penetration
  - Available in 5 types
  - Application range:
    - Power cables
    - Telecommunication cables
    - Supply pipes
    - Glass fibre, fibre-optic cables



- Wall sleeves**
  - Polymer cement
  - Steel or stainless steel

Please send us more information about the marked products.

Company: \_\_\_\_\_

Name: \_\_\_\_\_

Address: \_\_\_\_\_

E-mail: \_\_\_\_\_



**DDL**®  
Durchführungstechnik  
Dichtsysteme  
Lutz

**web** www.ddl-dichttechnik.de  
**phone** (+49) 07153 61093-0  
**fax** (+49) 07153 61093-029  
**mail** vertrieb@ddl-dichttechnik.de