



## DDL® S-HEF

### Divisional building entry

#### S-HEF ED Standard

Single seal insert (cables/pipes Ø 6–40 mm)

#### S-HEF DD Standard

Double seal insert (cables/pipes Ø 6–40 mm)

#### S-HEF DD GF

Double seal insert (glass fibre Ø 12–16 mm / 2x7 mm)

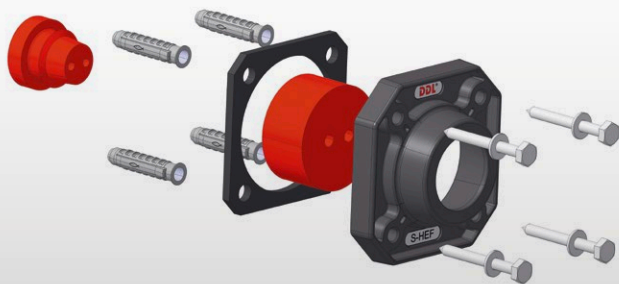
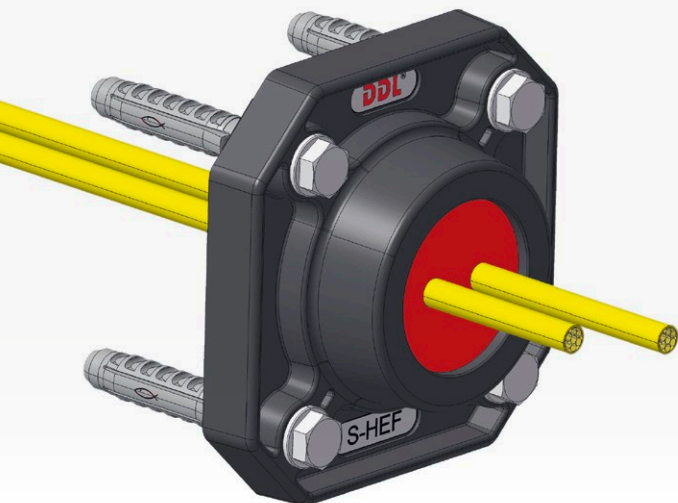
#### S-HEF EDS GF 2x7

Single seal insert + dirt guard (glass fibre Ø 12–16 mm)

#### S-HEF EDS GF 12–16

Single seal insert + dirt guard (glass fibre Ø 2x7 mm)

## S-HEF



The new DDL divisional building entry combinable for single or multiple-division penetration

#### Application range:

- Power cables
- Telecommunication cables
- Supply pipes
- Glass fibre, fibre-optic cables

#### Installation / Assembly:

- Simple and quick assembly
- Tight against pressing water
- No core-drilled holes/wall sleeves necessary
- Adaptable to the pipe or cable diameter using the layered ring technology

#### Prices:

S-HEF ED Standard	65,00 €
S-HEF DD Standard	125,00 €
S-HEF DD GF 2x7 / 12–16	140,00 €
S-HEF EDS GF 2x7	55,00 €
S-HEF EDS GF 12–16	70,00 €



# DDL®

Durchführungstechnik  
Dichtsysteme  
Lutz

**web** [www.ddl-dichttechnik.de](http://www.ddl-dichttechnik.de)  
**phone** (+49) 07153 61093-0  
**fax** (+49) 07153 61093-029  
**mail** [vertrieb@ddl-dichttechnik.de](mailto:vertrieb@ddl-dichttechnik.de)