

ACCESSORIES

The purchaser of the DDL seal inserts is responsible for their suitability for use and for all damages (immediate or consequential) resulting from improper installation.

NOTE

Seal insert internal wall for cables/pipes/Ø 6-40 mm
S-HEF ED Standard

Seal insert internal wall for cables/pipes/Ø 6-40 mm
S-HEF DD Standard

Seal insert internal wall for cables/pipes/Ø 6-40 mm
S-HEF DD GF

Seal insert internal wall for glass fibre cables 2 x Ø 7 mm or 1 x Ø 12-16 mm
 Seal insert external wall for cables/pipes/corrugated tubes
 Ø 6-40 mm
S-HEF EDS GF 2 x 7

Seal insert internal wall for glass fibre cables 2 x Ø 7 mm
S-HEF EDS GF 12-16

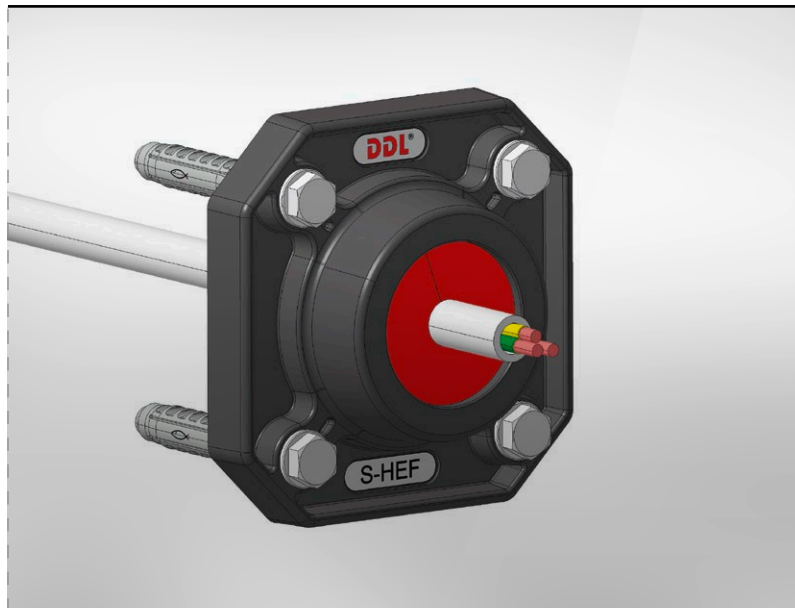
Seal insert internal wall for glass fibre cables Ø 12-16 mm
 Dirt guard external wall for glass fibre cables Ø 12-16 mm

DIVISIONAL BUILDING ENTRY S-HEF IN 5 TYPES

DDL® S-HEF

Installation guide for divisional building entry (S-HEF)

(water / power / telecommunication / glass fibre)



DDL GmbH, Borsigstr. 26, D-73249 Wernau/N.

© DDL GmbH. We reserve the right for modifications in technology and design, Februar 2021

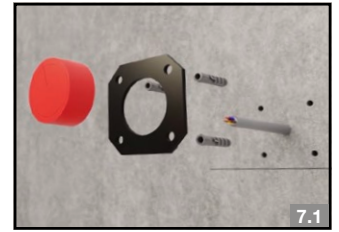
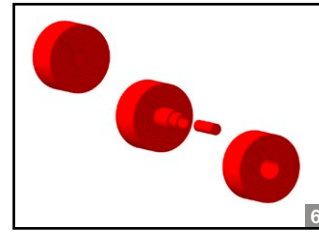
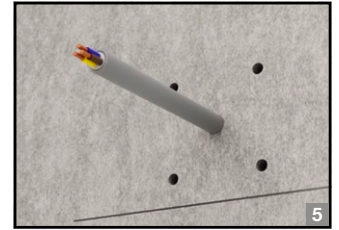
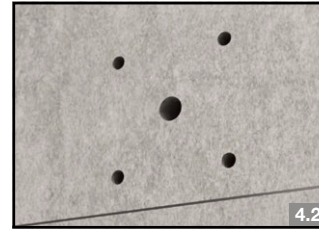
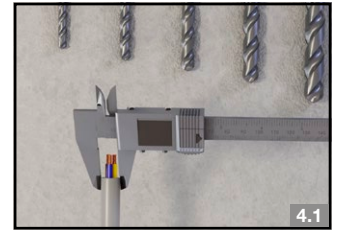
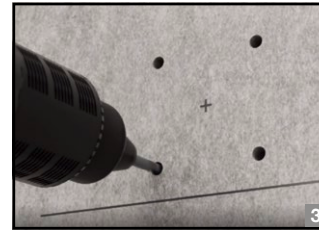
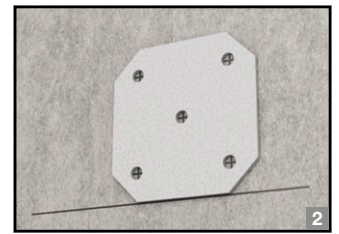
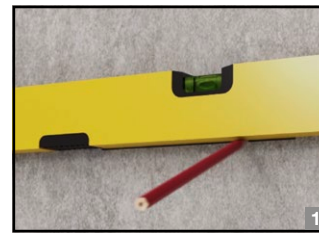
web www.ddl-dichttechnik.de
 phone (+49) 07153 61093-0
 fax (+49) 07153 61093-029
 mail vertrieb@ddl-dichttechnik.de



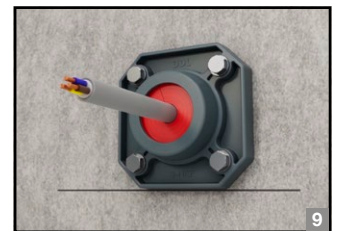
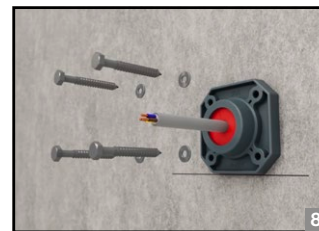
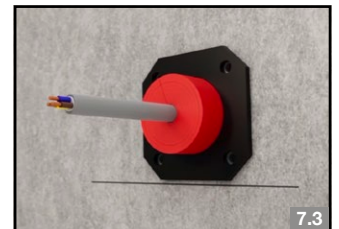
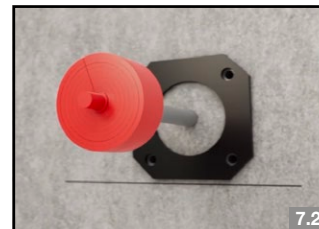
Last updated: February 2021

INSTRUCTIONS

- 1 Mark the lower edge of the divisional building entry on the internal wall of the building
- 2 Place the drilling template (included in delivery) against the wall and mark all five drill holes on the wall
- 3 Drill dowel holes into the wall 4 x Ø 10 x 60 and insert dowels (included in delivery)
- 4 Choose the drilling diameter for centric penetration opening in building and drill
 - up to 9 mm OD* cable/pipe → Ø 10 mm
 - up to 19 mm OD* cable/pipe → Ø 20 mm
 - up to 29 mm OD* cable/pipe and glass fibre cable 2 x 7 → Ø 30 mm
 - up to 36 mm OD* cable/pipe → Ø 40 mm
 - up to 40 mm OD* cable/pipe → Ø 45 mm
 *outside diameter
- 5 Lead the cable/pipe through the wall to desired length, facing the ground
 - when using type **S-HEF EDS** lead the cable through the red dirt guard sealing beforehand, facing the ground (2 x 7 or 12–16)
 - when using types **S-HEF DD and DD GF** first lead the cable through the S-HEF housing and then through the (adapted) red segmental ring seal insert
- 6 When using the red segmental ring seal insert, adapt it to the cable/pipe diameter by removing the appropriate segmental rings. See section “Adapting the segmental ring seal insert” for instructions



- 7 Press the red seal insert over the cable/pipe to the wall (caution: open segmental ring side must be facing the wall!)
- 8 Pull the S-HEF housing with inserted rubber sealing plate over the cable/pipe and press it to the wall while pressing the red seal insert into the opening of the housing back
- 9 Screw together with four pieces of hexagon screws 7 x 60 and washers (included in delivery) until the rear housing frame with inserted rubber sealing plate lies completely against the wall and is securely fastened.



When using type **S-HEF DD** install another assembly kit facing the ground by repeating steps 6–9.

When using type **S-HEF ED** protect the penetration on the external wall against impurities with sealing material (not included in delivery, e.g. foam) upon completion.

SELECTION OF SEGMENTAL RING

Segmental ring element	cuts at [mm]	cable diameter	
		from [mm]	to [mm]
1 (blind cover)	10	6	10
2	14	>10	14
3	18	>14	18
4	24	>18	24
5	30	>24	30
6	36	>30	36
7	42	>36	40

ADAPTION OF SEGMENTAL RING SEAL INSERT

- Determine the adequate segmental ring diameter with the help of the table
- Open the segmental ring seal insert at the junction (a)
- Unfold the segmental ring seal insert
- Detach the segmental ring blind cover (1) and the surplus segmental rings (2–7) annularly from inside to outside. Caution: detaching too many segmental rings will impair the tightness
- Place the segmental ring insert around the cable/pipe, close it and press it to the wall. Caution: open segmental ring side must be facing the wall

