

# DDL<sup>®</sup> SANI-Pipe

## Installation guide for repairing pipe penetrations

**DDL SANI-Pipe may only be used with the glue provided. Follow the processing instructions and safety data sheets of the glue as well.**

- Make sure the substrate is dry, flat and free from oils, fats and separating agents. Cement slurry needs to be removed in particular. Fasten the pipe or cable where it sticks out of the ceiling or wall (with mortar or foam) before assembling the **DDL SANI-Pipe**; the pipe may not move during the repair process!
- Sketch the outer outline of the **DDL SANI-Pipe** on the substrate with a half shell (image 1).
- Slightly roughen and dust smooth surfaces and pipe/cable with sandpaper at the areas to be glued.
- Cut the tip of the glue tube so that the hole is about 2 mm wide and apply glue to the junctions (borders) of the **DDL SANI-Pipe** (image 2).
- Cut the tip of the glue tube again so that the hole is big enough for the glue to balance the gap between pipe/cable and **DDL SANI-Pipe** (rule of thumb: inside diameter of **DDL SANI-Pipe** minus outside diameter of carrier pipe divided by 2). Add 3 glue strands to each **DDL SANI-Pipe** half shell. Make sure that the first one is applied at the outer edge of the shaft, the second one about 2 cm below the first and the third one just above the chamfer (image 3).

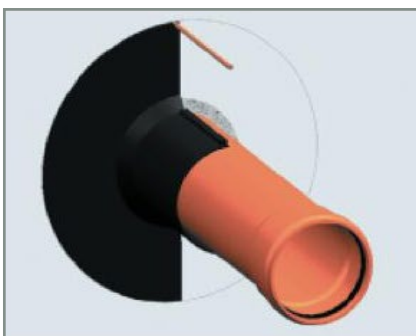


image 1



image 2



image 3

- Apply the first strand of glue to the substrate along the marked line (inside). Apply a second strand at the edge of the penetration. Make sure it is so far away from the penetration that the **DDL SANI-Pipe** shell will cover it later. Apply a third strand in the middle of the two other strands for **DDL SANI-Pipe** diameters DN 100, DN 125 and DN 150 (image 4).

- Joint both half shells around the pipe about 2 cm away from the wall (image 5) and slide them toward the substrate rotating slightly so that a glue bulge appears at the borders of the disk and at the shaft of the **DDL** SANI-Pipe. Make sure that the half shells are entirely closed, especially at the area of the disk (image 6).

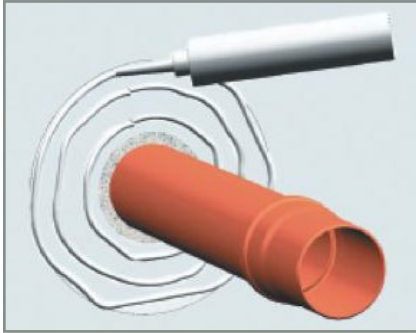


image 4

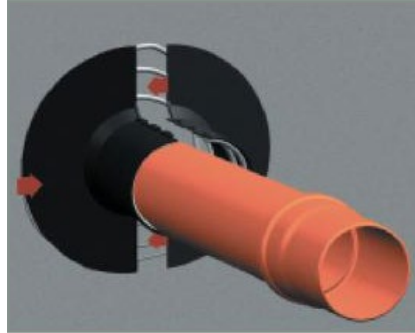


image 5

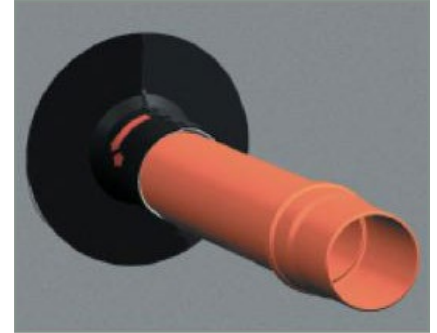


image 6

The purchaser of the DDL SANI-Pipe is responsible for its suitability for use and for all damages (immediate or consequential) resulting from improper installation.